



American Sensor Technologies Standard Electrical Connections For AST Pressure Products

**DIN
for Single Seal**

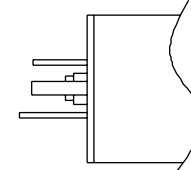
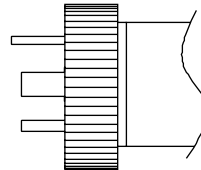


	mV	Voltage			4-20mA
		0.5-4.5V ratiometric	1-5V, 1-6V, 0-5V	0-10V, 1-10V	
Supply Voltage	5VDC typ., 10VDC max.	5VDC ± 0.01V	10-28VDC	15-28VDC	10-28VDC
Output Load	>1 MΩ	>10 KΩ	>10 KΩ	>10 KΩ	0-800Ω
Operating Temperature	-40 to 105°C	-40 to 85°C	-40 to 85°C	-40 to 85°C	-40 to 85°C

Hirschmann
AST Electrical Connection option
Mates with
AST Mating Connector Part Number
Available on AST Models:

DIN 43650A 18.0mm
"J"
Hirschmann 931 970-100 [conduit] or equivalent
A04598 [for Class 1 Div 2 applications]
AST4300/43LP/4310/4400/44LP/4410

Mini-DIN 43650C 8.0mm
"E"
Hirschmann 933 023-100
A01980
AST4400/ 44LP /4410



Hirschmann
Output Type
3 Wire Voltage
4-20 mA

DIN43650A 18.0mm			
Pin 1	Pin2	Pin 3	Wide Pin
+V	Ground	S	Case
+V	Ground	Case	N/C

Mini-DIN 43650C 8.0mm			
Pin 1	Pin 2	Pin 3	Wide Pin
S	Ground	+V	Case
N/C	Ground	+V	Case

S= Output Signal
V= Voltage Supply
N/C= Not Connected
Case= Case Ground

