



American Sensor Technologies Standard Electrical Connections For AST Pressure Products

DIN

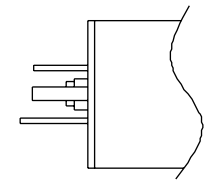
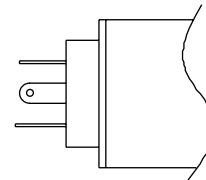
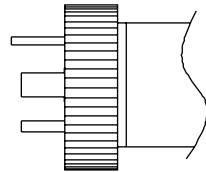
	mV	Voltage			4-20mA
		0.5-4.5V ratiometric	1-5V, 1-6V, 0-5V	0-10V, 1-10V	
Supply Voltage	5VDC typ., 10VDC max.	5VDC ± 0.01V	10-28VDC	15-28VDC	10-28VDC
Output Load	>1 MΩ	>10 KΩ	>10 KΩ	>10 KΩ	0-800Ω
Operating Temperature	-40 to 105°C	-40 to 85°C	-40 to 85°C	-40 to 85°C	-40 to 85°C

Hirschmann
AST Electrical Connection option
Mates with
AST Mating Connector Part Number
Available on AST Models:

DIN 43650A 18.0mm
"I"
Hirschmann 931 970-100 [conduit] or equivalent
A04598 [for Class 1 Div 2 applications]
AST4300/4310/43LP/4400/4410/44LP/4700/4710/47LP/47HP/1000

DIN 43650B 9.4mm
"V"
Hirschmann 933 024-100
N/A
AST4700/4710/47LP

Mini-DIN 43650C 8.0mm
"E"
Hirschmann 933 023-100
A01980
AST4000/4200/4400/4410/44LP/4700/4710/47LP/47HP/4900/1000/5000/5100/AG200



Hirschmann
Output Type
mV & 4-Wire Voltage
3 Wire Voltage
4-20 mA

DIN43650A 18.0mm			
Pin 1	Pin2	Pin 3	Wide Pin
+S	Ground	+V	-S
+V	Ground	S	N/C
+V	Ground	N/C	N/C

DIN 43650B 9.4mm			
Pin1	Pin 2	Pin 3	Wide Pin
+S	Ground	+V	-S
+V	Ground	S	N/C
+V	Ground	N/C	N/C

Mini-DIN 43650C 8.0mm			
Pin 1	Pin 2	Pin 3	Wide Pin
+S	Ground	+V	-S
S	Ground	+V	N/C
N/C	Ground	+V	N/C

S= Output Signal
V= Voltage Supply
N/C= Not Connected

